

Stockwell Primary  
School



& Children's Centre  
Achieving Excellence Together

# Taking Stock

Achieving Excellence Together



Friday 9th October 2020

## Our Weekly Update

Dear Parents, Carers, Pupils and Friends,  
we've now turned the corner on Autumn  
term 1 and are heading steadily towards the  
half term break.

With each week that passes the children  
grow and learn more and more and it is a  
pleasure to have them in the building.  
The Value of October is courtesy and the  
children have been showing this in  
abundance.

Read on to find out what we have been  
doing and to get key messages.

Have a fantastic weekend!

## Communication

Please be reminded that, should you need to  
speak to the office, please do so by phone.  
This is to reduce the number of adults on  
site and to keep everyone safe.

All communication is done via phone and  
email. If you are not receiving emails please  
follow the steps below:

How the parent can Re-subscribe  
Login to SCOPAY.com

Scroll down to the bottom of the screen and click  
on Re-subscribe

Enter the email address and select I'm not a robot

A message will be displayed Successfully re-  
subscribed

Send a test email to the parent to ensure this re-  
solves the issue

# Staggered start times and Timetables

We have made every effort to minimise the number of people and congestion around the school site during drop off and collection times. As such we ask that you follow the entry / exit points and timings set out for classes and year groups.

Below are the drop off and collection times for all classes and an example timetable for your reference.

Please stick to your times and follow social distancing guidance at all times.

## Staggered Start and End times Mon - Thurs

8:30 – 11:30	8:45 – 3:15	9:00 – 3:30	9:15 – 3:45
Pre school	RA	RB	Nursery
	1A	1B	1C
	2A	2B	2C
	3A	3B	
	4A	4B	
	5A	5B	5C
	6A	6B	6C

## Staggered Start and End times Fridays

8:30 – 11:30	8:45 – 12:30	9:00 – 12:45	9:15 – 13:00
Pre	A Classes	B Classes	C classes

## Drop Off And Collection

Please do not enter the site until your designated time as you will not be able to wait on site.

We ask that you do not linger during drop off or collection and maintain social distancing guidelines with regards to other families. We also ask that, where possible, drop offs and collections are made by 1 family member.

While we appreciate it may be difficult to do so, we ask that parents "Drop and Go", continuing to move towards the exit at all times. This is to reduce congestion and allow for a smooth running of collections and drop offs.

## Lost property

Dear all, in order to ensure we are maintaining the integrity of our year group bubbles, and in light of parents not being on site we have made the following amendments to lost property:

Each year group will have a separate lost property box.

All unclaimed lost property will be washed and recycled termly.

The best way to ensure items are returned to owners is to ensure names are in all items brought to school.





# Assemblies and Learning



RA made repeating patterns with natural resources .

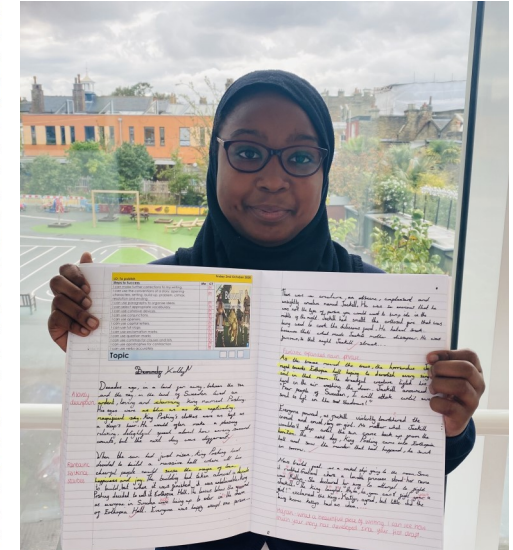


## Whole School Attendance Percentage Week beginning 28<sup>th</sup> September 2020 **95.1%**

Class	%	Key Stage
Rec. B	96.6	Foundation Stage
Rec. A	98.9	
Year 1A	92.2	Key Stage 1
Year 2C	93.6	
Year 1C	94.7	
Year 2A	96.4	
Year 1B	97.0	
Year 2B	97.5	Lower Key Stage 2
Year 3B	88.9	
Year 4A	92.7	
Year 4B	94.7	
Year 3A	99.2	Upper Key Stage 2
Year 6A	86.8	
Year 6B	92.8	
Year 5A	95.6	
Year 5C	96.0	
Year 5B	98.4	
Year 6C	99.5	



Year 2 applying knowledge of Shapes in a practical way



Congratulations Hajrah for being the Writer of The Week!



Y5 were given chalk at lunchtime - They created this beautiful NHS thank you

## Packed lunches

Just a gentle reminder about packed lunches brought to school: Please ensure children have a healthy packed lunch and remember that we do not allow glass bottles, fizzy drinks and items containing nuts.



# Recent Events

## Google classroom Workshop

A massive thank you to all the parents who attended the Google classroom and home learning workshop we held on the 6th October. We hope you found the information useful and are now all set for working with Google classrooms!

Don't worry if you missed it; the presentation and online tutorials have been uploaded onto the website under the: News and Events / Events Tab.

See also link Below:

<https://www.stockwell-pri.lambeth.sch.uk/News/Events/>



If you require any further support with this please do not hesitate to contact the school via the usual channels (Phone or Email) and we will arrange for someone to help you!

## KS2 Reading workshop and online resource demo

Apologies to everyone who had planned to attend the KS2 reading Demo session scheduled for Monday 5th October. We have had to reschedule this as we are still in consultation with our new online reading provider!

This session will now be held on Thursday 15th at 17:00.

Link: <https://meet.google.com/kfp-jszg-cdr>



## EYFS & KS1 Reading Demo

Thanks you to everyone who attended the Oxford Reading Buddies online session led by Mr Serra , Mr Banton and Ms Kelleher. We hope you found the information useful and are ready to make the most of this fantastic resource.

Don't worry if you missed it; the presentation is available on our website under the Events tab. You can also access it by clicking [here](#).

Please speak to your class teacher or contact the office if you need any support.

Happy Reading!





# Diversity of the Curriculum

## Nursery: I Am Special

### 1. Key Objectives

Children will be able to:

- identify and name themselves and their friends
- understand the importance of the family and the role of the family members
- understand the importance of the school and the role of the school members
- understand the importance of the community and the role of the community members
- understand the importance of the environment and the role of the environment members

### 2. Communication, Language and Literacy

Children will be able to:

- use simple words and phrases to describe themselves and their friends
- use simple words and phrases to describe the family and the role of the family members
- use simple words and phrases to describe the school and the role of the school members
- use simple words and phrases to describe the community and the role of the community members
- use simple words and phrases to describe the environment and the role of the environment members

### 3. Expressive Art and Design

Children will be able to:

- use simple materials to create a self-portrait
- use simple materials to create a family portrait
- use simple materials to create a school portrait
- use simple materials to create a community portrait
- use simple materials to create an environment portrait

### 4. Personal, Social and Emotional Education

Children will be able to:

- understand the importance of the family and the role of the family members
- understand the importance of the school and the role of the school members
- understand the importance of the community and the role of the community members
- understand the importance of the environment and the role of the environment members

## Year Group: Reception

### Topic: An special

**Learning Objectives:** Following some things in common


**Competence:** To look for similarities and differences

**Family:** The closest people to you

**Local area:** This location around me


**Feelings:** You may feel inside

**1. Art and Design**



Children will be able to draw and colour a picture of a person or object that they like. They will be able to draw and colour a picture of a person or object that they like. They will be able to draw and colour a picture of a person or object that they like.

**2. Personal, Social and Emotional Education**



Children will be able to draw and colour a picture of a person or object that they like. They will be able to draw and colour a picture of a person or object that they like. They will be able to draw and colour a picture of a person or object that they like.

**A. Curriculum Aims/Outcomes:** Our children will be able to "open space". We will ask at school, in real life, situations, numbers, or in our own or other people's lives. We will be able to identify about our local area.



This half term is all about opening up to our school, exploring the setting and making some connections with the world around us.

We will be exploring what our kids like to do. We will ask the question: is different and unique.

We will be exploring about our local community and feeling about our school.

We will be exploring about our local community and feeling about our school.

Interpretation	Competence	Well-being	Flexibilities	Environment
<p><b>Communication, Language and Literacy</b></p> <p>Children will be able to draw and colour a picture of a person or object that they like. They will be able to draw and colour a picture of a person or object that they like. They will be able to draw and colour a picture of a person or object that they like.</p>	<p><b>Mathematics</b></p> <p>Children will be able to draw and colour a picture of a person or object that they like. They will be able to draw and colour a picture of a person or object that they like. They will be able to draw and colour a picture of a person or object that they like.</p>	<p><b>Understanding of the World</b></p> <p>Children will be able to draw and colour a picture of a person or object that they like. They will be able to draw and colour a picture of a person or object that they like. They will be able to draw and colour a picture of a person or object that they like.</p>	<p><b>Personal, Social and Emotional Education</b></p> <p>Children will be able to draw and colour a picture of a person or object that they like. They will be able to draw and colour a picture of a person or object that they like. They will be able to draw and colour a picture of a person or object that they like.</p>	<p><b>Physical Education</b></p> <p>Children will be able to draw and colour a picture of a person or object that they like. They will be able to draw and colour a picture of a person or object that they like. They will be able to draw and colour a picture of a person or object that they like.</p>

[illegible][illegible]

Across the Partnership, we are very proud of the diversity we have within our bespoke curriculum. We feel that the ethnic make up of our community should be represented across all areas of our curriculum and throughout the year. As such, we do not single out October as the only month to celebrate black history; rather we have woven the history of all the communities we represent into the curriculum as a whole.

We passionately believe that, by building this approach into everything we do, the children of the Partnership will see themselves represented in daily teaching. This will allow them to gain confidence as they will have the knowledge that they all can achieve great things irrelevant of their colour creed or background.

### Year Six: Wakanda Forever

**1. Key Vocabulary**

**Adaptation:** A change in an organism's traits that helps it survive in its environment.

**Extinction:** The state of no longer existing.

**Evolution:** The process of change in a population of organisms over time.

**Genetics:** The study of genes and heredity.

**Hypothesis:** A proposed explanation for a phenomenon, which can be tested.

**Observation:** The act of noticing or perceiving something.

**Speciation:** The process by which new species are formed.

**Survival of the fittest:** The ability of an organism to survive and reproduce in its environment.

**Theory:** A well-substantiated explanation of some aspect of the natural world.

**Tribe:** A group of people with a common ancestry and culture.

**Wildlife:** Animals and plants that live in the wild.

**Yield:** The amount of product or crop obtained from a process.

### 2. Curriculum Knowledge

**1. The process of evolution:**

- Evolution is the change in the heritable characteristics of biological populations over successive generations.
- The process of evolution is driven by natural selection, which is the differential survival and reproduction of individuals with certain traits.
- Evolution can be observed in many organisms, including bacteria, plants, and animals.
- The fossil record provides evidence for evolution, showing the gradual change in the form of organisms over time.
- Genetic evidence, such as DNA sequencing, has provided strong support for the theory of evolution.

**2. The process of speciation:**

- Speciation is the process by which new species are formed.
- It occurs when a population of organisms is divided into two or more groups, each of which evolves independently.
- Over time, the groups accumulate genetic differences, leading to the formation of new species.
- Speciation can occur in many ways, including allopatric speciation, sympatric speciation, and parapatric speciation.

**3. The process of adaptation:**

- Adaptation is the process by which an organism becomes better suited to its environment.
- It can occur through natural selection, where individuals with traits that are better suited to the environment survive and reproduce more successfully.
- Adaptations can be physical, behavioral, or physiological.
- Examples of adaptations include camouflage, migration, and hibernation.

**4. The process of extinction:**

- Extinction is the state of no longer existing.
- It can occur for many reasons, including natural causes, human activities, and environmental changes.
- Many species have become extinct throughout the history of life on Earth.
- Human activities, such as deforestation and climate change, are causing an increase in extinctions.

**5. The process of genetics:**

- Genetics is the study of genes and heredity.
- Genes are the units of heredity that are passed from parents to offspring.
- Genes determine the traits of an organism, such as its color, shape, and size.
- Genetics has many applications, including in medicine, agriculture, and forensic science.

### 3. Skills

**1. Analytical Skills:**

- Students will be able to analyze the process of evolution and speciation.
- Students will be able to identify the factors that influence the rate of evolution.
- Students will be able to explain the relationship between evolution and speciation.

**2. Communication Skills:**

- Students will be able to communicate their understanding of evolution and speciation.
- Students will be able to work in groups to discuss and present their findings.

**3. Critical Thinking Skills:**

- Students will be able to evaluate the evidence for evolution and speciation.
- Students will be able to identify the strengths and weaknesses of different theories.

**4. Creative Thinking Skills:**

- Students will be able to design experiments to test their hypotheses.
- Students will be able to create models of evolution and speciation.

**5. Problem Solving Skills:**

- Students will be able to solve problems related to evolution and speciation.
- Students will be able to apply their knowledge to real-world situations.

Enterprise	Communication	Well-Being	Possibilities	Environment
<p><b>1. The process of evolution:</b></p> <ul style="list-style-type: none"> <li>Evolution is the change in the heritable characteristics of biological populations over successive generations.</li> <li>The process of evolution is driven by natural selection, which is the differential survival and reproduction of individuals with certain traits.</li> <li>Evolution can be observed in many organisms, including bacteria, plants, and animals.</li> <li>The fossil record provides evidence for evolution, showing the gradual change in the form of organisms over time.</li> <li>Genetic evidence, such as DNA sequencing, has provided strong support for the theory of evolution.</li> </ul>	<p><b>2. The process of speciation:</b></p> <ul style="list-style-type: none"> <li>Speciation is the process by which new species are formed.</li> <li>It occurs when a population of organisms is divided into two or more groups, each of which evolves independently.</li> <li>Over time, the groups accumulate genetic differences, leading to the formation of new species.</li> <li>Speciation can occur in many ways, including allopatric speciation, sympatric speciation, and parapatric speciation.</li> </ul>	<p><b>3. The process of adaptation:</b></p> <ul style="list-style-type: none"> <li>Adaptation is the process by which an organism becomes better suited to its environment.</li> <li>It can occur through natural selection, where individuals with traits that are better suited to the environment survive and reproduce more successfully.</li> <li>Adaptations can be physical, behavioral, or physiological.</li> <li>Examples of adaptations include camouflage, migration, and hibernation.</li> </ul>	<p><b>4. The process of extinction:</b></p> <ul style="list-style-type: none"> <li>Extinction is the state of no longer existing.</li> <li>It can occur for many reasons, including natural causes, human activities, and environmental changes.</li> <li>Many species have become extinct throughout the history of life on Earth.</li> <li>Human activities, such as deforestation and climate change, are causing an increase in extinctions.</li> </ul>	<p><b>5. The process of genetics:</b></p> <ul style="list-style-type: none"> <li>Genetics is the study of genes and heredity.</li> <li>Genes are the units of heredity that are passed from parents to offspring.</li> <li>Genes determine the traits of an organism, such as its color, shape, and size.</li> <li>Genetics has many applications, including in medicine, agriculture, and forensic science.</li> </ul>

[illegible][illegible]

# Upcoming events

Looking for a great start  
to your child's Education?



Not sure how to apply?



[meet.google.com/kfp-jszg-cdr](https://meet.google.com/kfp-jszg-cdr)

Thinking of Joining the Stockwell Family in  
September 2021?

## RECEPTION OPEN DAYS

Join us **virtually** for a tour of the environment and an opportunity to meet the team.

Use the links provided or call the office to get an invite to one of these virtual meetings:

**Wednesday 14th October 2020 @ 14:00**

[meet.google.com/dtd-revf-vud](https://meet.google.com/dtd-revf-vud)

**Thursday 5th November 2020 @ 17:00**

[meet.google.com/pxc-yuvi-fqh](https://meet.google.com/pxc-yuvi-fqh)

**Wednesday 25th November 2020 @ 9:30**

[meet.google.com/wqi-esfe-tht](https://meet.google.com/wqi-esfe-tht)

Stockwell Primary School  
Stockwell Road  
London  
SW9 9TG  
Tel: 020 7274 768  
[www.stockwell-pri.lambeth.sch.uk](http://www.stockwell-pri.lambeth.sch.uk)

**Tuesday 13th October**

9:15—10:00

**Parent Forum**

[meet.google.com/uis-vubw-yuu](https://meet.google.com/uis-vubw-yuu)

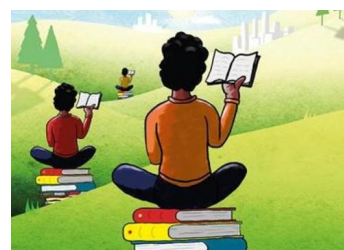


**Thursday 15th October**

17:00—18:00

**KS2 Reading workshop and online resource demo**

<https://meet.google.com/kfp-jszg-cdr>



**Half Term: Week commencing Monday 26th October**

School closes by 13:00 on Friday 23rd October.

Usual Friday collection times apply



**In Service Training Day (Inset)**

**Monday 2nd November**

**School Closed to Children**

please contact the school office via email:

[clericalofficer2@stockwell-pri.lambeth.sch.uk](mailto:clericalofficer2@stockwell-pri.lambeth.sch.uk)

# Children's Centre Update

We are looking forward to opening our doors once again, after a very uncertain and challenging time for us all. It will be a slow start, with services and sessions starting from the end of September onwards. Liz Atkinson has been having building work since January, this is nearly completed and we hope to start running services towards the end of October/ beginning of November.

To keep you, your family and our staff safe we have had to make changes to how our services are delivered. Things may look and feel different to how they were before the lockdown period.

## What has changed....

- You will be asked to wash your hands (for at least 20 seconds) or use hand sanitiser on arrival.
- All of our group/face to face sessions are now bookable. If you haven't booked in advance and your name is not on the list, you will not be able to attend.
- Our sessions have been reduced to an hour, so staff have time to clean and sterilise equipment used.
- A very limited amount of parents and children will be able to attend. If a session is fully booked, you will be prioritised for the session the week after.
- Only 1 adult from each family is able to come along to a session.
- Windows and garden doors will be open within the centres to keep the rooms well ventilated.
- At stay and play we will encourage use of the garden space as much as possible, with minimal set up of play opportunities indoors – so please dress for the weather.
- All adults need to observe social distancing rules and keep 2 metres apart.
- The entrance in to the centres may have changed, this will be clearly labelled.
- Buggies must be left in the buggy park and not brought in to the centre.
- If you put your name down to attend a course, you will be contacted to let you know you have been given a place, spaces will be limited.

## What is on....

**Monthly Home Learning Resource Pack Collection** – contact the centre you would like to collect from by telephone/text message and add your details to the monthly collection list. You will receive a message on collection day each month as a reminder of the time to collect.

**Story & Song Time** – contact one of our centres by telephone/text message to add your mobile number to the list to receive weekly videos.

**Small Group Play** – a small group play session for parents with children 1 – 4years.

**Chat & Play** – one to one appointments with a Better Start Worker/ Spanish & Portuguese Worker for support, a chat and a play opportunity.

**Sensory Group** – an invite only session for parents of young children with complex needs.

**Baby Bounce & Rhyme** – a small group rhyme session for parents with babies up to a year old.

**Courses** – please telephone/send a text message to the individual centre to put your name down.



# Children's Centre Booking Program

Monday	Tuesday	Wednesday	Thursday	Friday
Health Visiting Appointments 10 – 3 pm ( <u>Stockwell</u> )	Health Visiting Appointments 10 – 3 pm ( <u>Stockwell</u> )	Baby Bounce & Rhyme 10 – 11am ( <u>Liz Atkinson</u> ) Date to be Confirmed	Food Ambassador Course 9:30 – 11:30am ( <u>Liz Atkinson</u> ) Limited crèche available Date to be Confirmed	Mosaic Course 9:30 – 11:30am ( <u>Liz Atkinson</u> ) Limited crèche available Date to be Confirmed
Chat & Play 10 -12noon ( <u>Stockwell</u> )	Chattertime Live! 10am <a href="http://www.facebook.com/EvelinaLondonSLT/">http://www.facebook.com/EvelinaLondonSLT/</a>	Citizens Advice Telephone Appointments 10 – 1pm (contact any centre to book)	Antenatal Appointments 1 – 4pm ( <u>Jessop</u> )	Health Visiting Appointments 10 – 12:30pm ( <u>Stockwell</u> )
Spanish & Portuguese Chat & Play 1 – 3pm ( <u>Stockwell</u> )	Small Group Play 10 – 11am ( <u>Liz Atkinson</u> ) Date to be Confirmed	Sharing REAL 10 – 12 noon ( <u>Virtual Course</u> ) 11 <sup>th</sup> Nov, 18 <sup>th</sup> Nov, 25 <sup>th</sup> Nov, 2 <sup>nd</sup> Dec Call 07432739032 to book	Chat & Play 1 – 3pm ( <u>Liz Atkinson</u> ) Date to be Confirmed	Veg Bag Collection 12 – 2pm ( <u>Stockwell</u> ) Invite only
Sensory Group 1:30 – 2:30pm ( <u>Jessop</u> ) Referral & Invite only	Mini Chefs 1 – 2:30pm ( <u>Liz Atkinson</u> ) LEAP families only Date to be Confirmed	Small Group Play 1:30 – 2:30pm ( <u>Stockwell</u> )	Baby Bounce & Rhyme 1:30 – 2:30pm ( <u>Stockwell</u> )	Small Group Play 1:30 – 2:30pm ( <u>Jessop</u> )
Monthly Home Learning Pack Collection 1:30 – 2:30pm ( <u>Stockwell</u> ) 26 <sup>th</sup> Oct, 23 <sup>rd</sup> Nov, 14 <sup>th</sup> Dec	ESOL Course 1:15 – 3:15pm ( <u>Stockwell</u> ) Limited crèche available Assessment – 29 <sup>th</sup> Sept Starts – 6 <sup>th</sup> Oct	Chat & Play 1 – 3pm ( <u>Jessop</u> )	Monthly Home Learning Pack Collection 1:30 – 2:30pm ( <u>Liz Atkinson</u> ) 26 <sup>th</sup> Nov, 17 <sup>th</sup> Dec	Starting Solids Virtual Workshop <a href="mailto:EYNutrition@gstt.nhs.uk">EYNutrition@gstt.nhs.uk</a>  email to sign up Varied dates & times
Story & Song Time 2pm  Weekly story and song time, sent out to your mobile via Whatsapp to enjoy at home from our Area Team  (contact any centre to sign up for weekly video)	Baby Bounce & Rhyme 1:30 – 2:30pm ( <u>Jessop</u> )	Monthly Home Learning Pack Collection 1:30 – 2:30pm ( <u>Jessop</u> )  28 <sup>th</sup> Oct, 25 <sup>th</sup> Nov, 16 <sup>th</sup> Dec	Chattertime Live! 2:15pm <a href="http://www.facebook.com/EvelinaLondonSLT/">http://www.facebook.com/EvelinaLondonSLT/</a>	
	Starting Solids Virtual Workshop <a href="mailto:EYNutrition@gstt.nhs.uk">EYNutrition@gstt.nhs.uk</a>  email to sign up Varied dates & times		Starting Solids Virtual Workshop <a href="mailto:EYNutrition@gstt.nhs.uk">EYNutrition@gstt.nhs.uk</a>  email to sign up Varied dates & times	



# Children's Centre Booking information

## **Booking for Sessions;**

**Booking for Small Group Play and Baby Bounce & Rhyme must be done on a weekly basis.** If a session is fully booked you will be asked if you would like to attend the session the week after, and will have priority for this. If you would like to sign up for the weekly video of Story & Song Time or Monthly Home Learning Resource Pack Collection, you will just need to give us your details once and you will be added to the list.

## **How to Book/Sign up;**

Please call or send a text message to the individual children's centre (these are colour coded within the timetable)

Stockwell – 0207 326 7328 / 07398131353

Liz Atkinson - (currently no landline number) / 07572156582

Jessop – 0207 737 5164 / 07379250222

You will need to tell us; the date and which session you want to attend, your name, your contact number, your child's name, your postcode.

Example; 22<sup>nd</sup> Sept, Baby Bounce & Rhyme, Sarah Smith, 07222333222, Henry Smith, SE24 0BJ

## **Booking for Courses;**

Please call the individual children's centre where the course is taking place, to register your interest. This does not mean you will be guaranteed a place; we will contact you if you are offered a place on the course. If you require a crèche place it is important you let us know at the time of registering your interest, again this will not be guaranteed. Our crèche places will be very limited, at times we may be able to offer you a place on a course but not a crèche place, so you would need to find your own childcare if you would like to attend.

**Please don't attend any sessions if you, your children or anyone in your household is self-isolating, in quarantine, have any symptoms of coronavirus or generally feel unwell.**

**It is also very important that you do not come to the children's centre if you or anyone in your household are awaiting the results of a test for coronavirus.**